

ST JOHNS BEACON  
LIVERPOOL



# ELEVATE YOUR BUSINESS

FOR THE FIRST TIME THIS CENTURY,

**ST JOHNS BEACON**  
IS AVAILABLE TO LET

BECOME PART OF LIVERPOOL'S SKYLINE



ST JOHNS BEACON

# A BREATHTAKING VIEWING EXPERIENCE

The tower's panoramic viewing platform will provide locals and visitors with 360-degree views 400 feet above the city, extending as far as the Wirral, North Wales, Lancashire, Snowdonia, and Blackpool.

## A PROMOTIONAL POWERHOUSE

With its commanding height and visibility, The Beacon serves as a dynamic canvas for large-scale branding and cultural celebrations, as demonstrated by last night's spectacular Oscars tribute.

## A UNIQUE ENTERTAINMENT, F&B OR COMMERCIAL OFFICE SPACE:

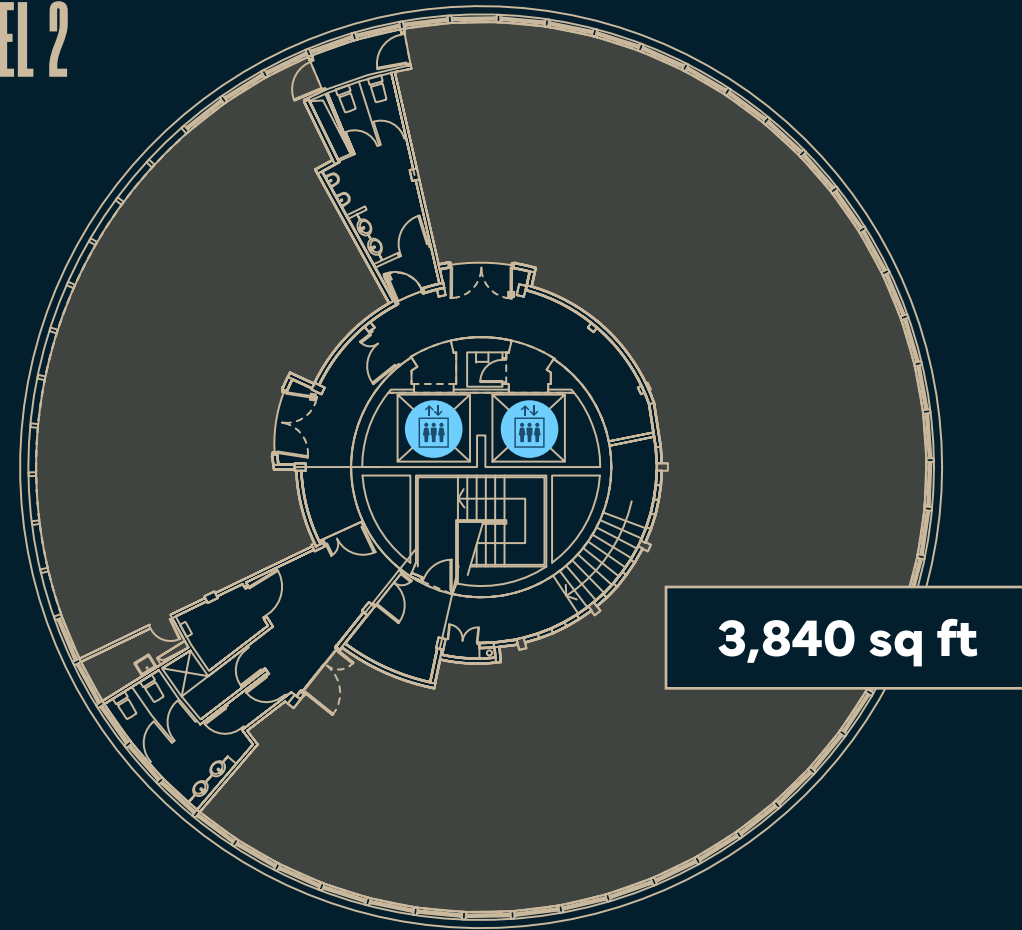
7,500 sq ft of prime real estate is now available for entertainment venues, dining concepts, offices or immersive experiences, elevating the tower as a hub for social and cultural activity on an international stage.

Located just steps from Lime Street Station, which welcomes nearly 20 million passengers annually, The Beacon is one of the first things visitors see when arriving in Liverpool. The international appeal of world-famous events such as the Eurovision Song Contest, The Open Championship, Southport Airshow, and the Grand National has helped cement Liverpool as a thriving tourist destination. In 2024 alone, the city's booming tourism industry generated over £6 billion with over 60 million people visiting the city.

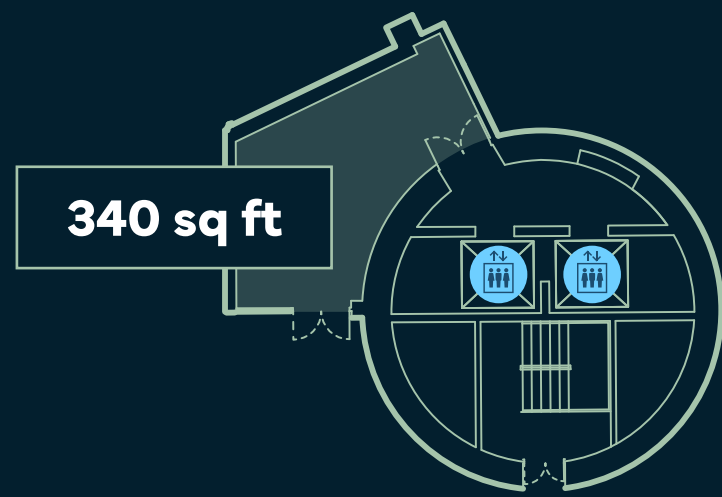
# AVAILABLE SPACE

|              |             |
|--------------|-------------|
| LEVEL 2      | 3,840 SQ FT |
| LEVEL 1      | 3,520 SQ FT |
| GROUND FLOOR | 340 SQ FT   |

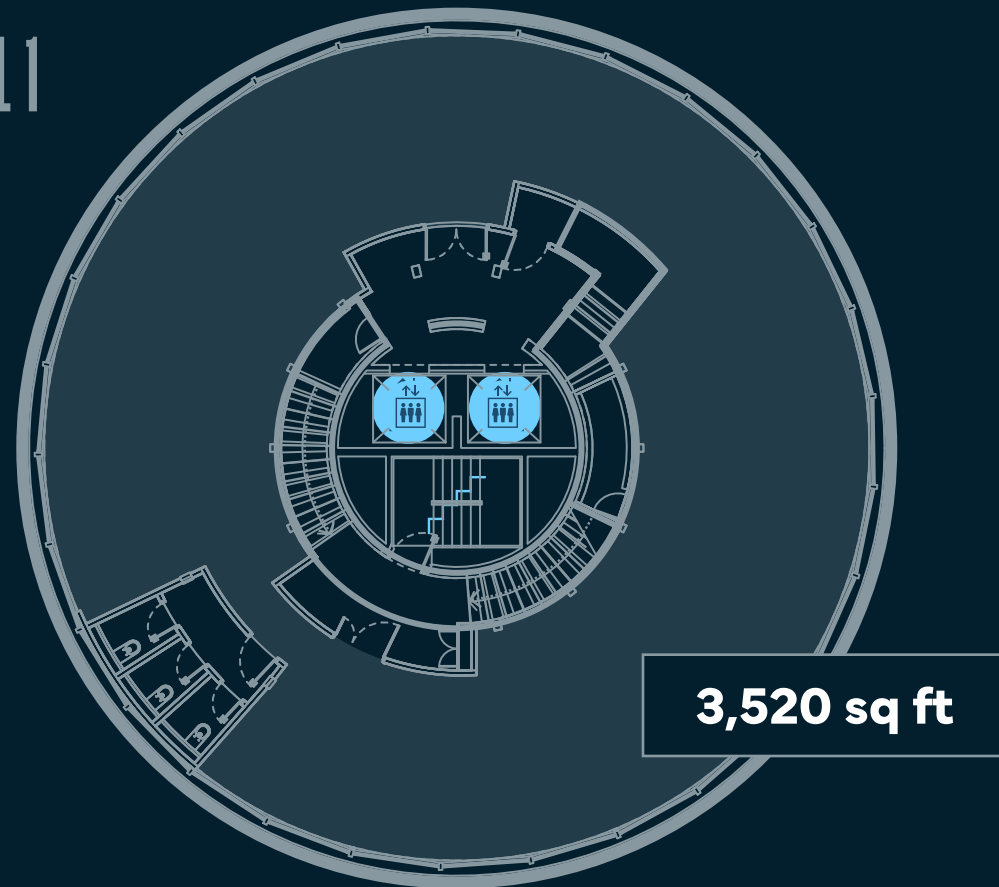
## LEVEL 2

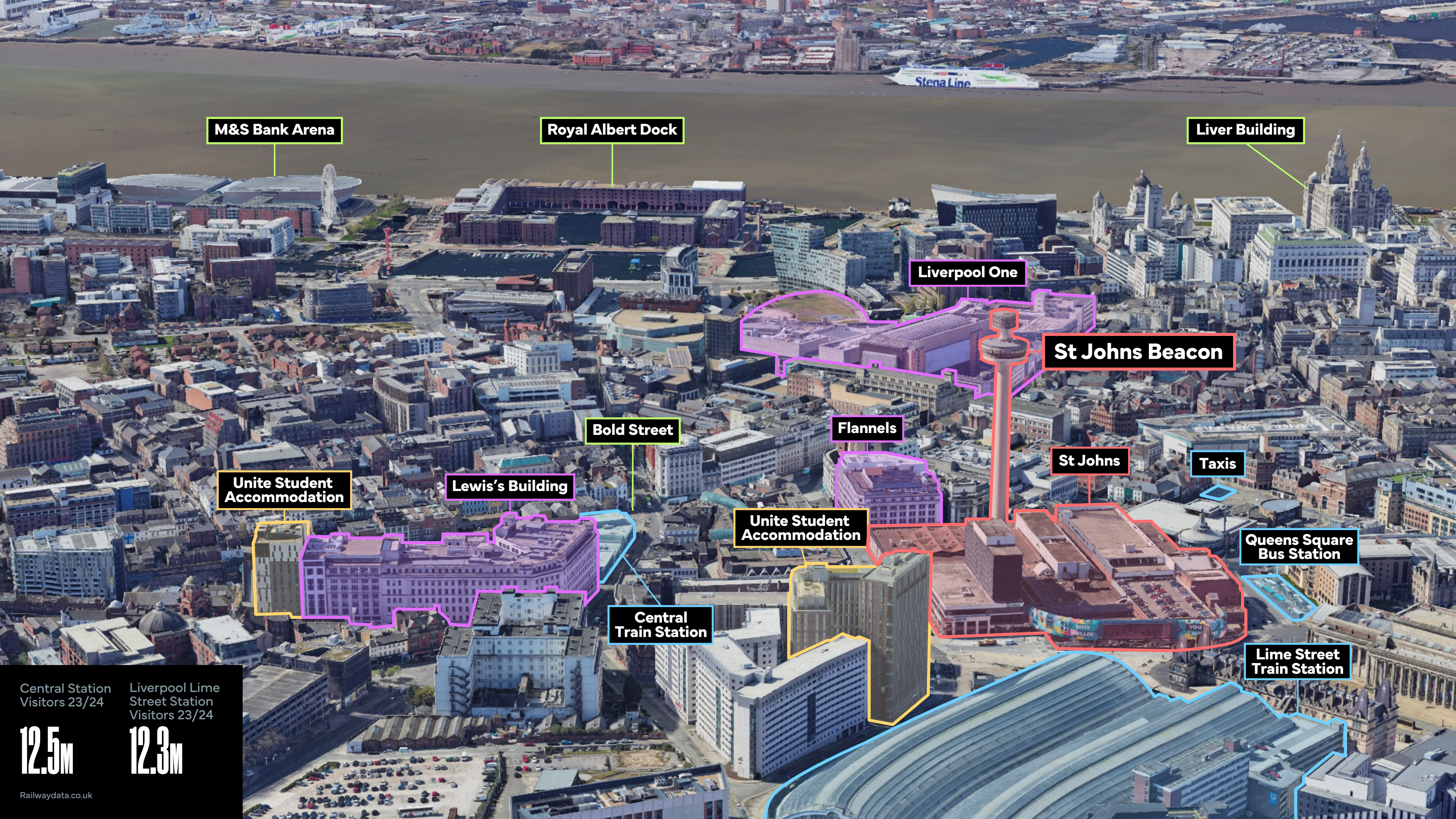


## RECEPTION



## LEVEL 1





M&S Bank Arena

Royal Albert Dock

Liver Building

Liverpool One

St John's Beacon

Bold Street

Flannels

St John's

Taxis

Unite Student Accommodation

Lewis's Building

Unite Student Accommodation

Queens Square Bus Station

Central Train Station

Lime Street Train Station

Central Station  
Visitors 23/24

Liverpool Lime  
Street Station  
Visitors 23/24

12.5M

12.3M



**ST JOHNS BEACON**  
LIVERPOOL



### Leasing Agents

**AVISON  
YOUNG**

IAN STEELE  
+44 7884 476841  
ian.steele@avisonyoung.com  
avisonyoung.com



ANDREW OWEN  
+44 7798 576789  
andrew@worthingtonowen.com  
worthingtonowen.com



TOM PRESCOTT  
+44 7841 168163  
barkerproudlove.co.uk

**LUNSONMITCHENALL**

JOHN FOWLER  
+44 7900 193225  
johnf@lunson-mitchenall.co.uk  
lunson-mitchenall.co.uk

IMPORTANT - Avison Young, Worthington Owen, Lunson Mitchenall and Barker Proudlove give notice that (i) the particulars are set out as a general outline only for the guidance of intending purchasers or lessees, and do not constitute, nor constitute part of, an offer or contract; (ii) all descriptions, references to condition and necessary permissions for use and occupation, and other details are given in good faith and are believed to be correct but any intending purchasers or tenants should not rely on these as statements or representations of fact but must satisfy themselves by inspection or otherwise as to the correctness of each item; (iii) no person in the employment of Avison Young, Worthington Owen, Lunson Mitchenall or Barker Proudlove has any authority to make or give any representation or warranty whatever in relation to this property.