



# RETAIL OPPORTUNITIES AT THE UNIVERSITY OF LIVERPOOL

CONNECT WITH A VIBRANT CAMPUS IN THE HEART OF THE CITY





# A thriving university, at the heart of a thriving city.

Today, we are a globally connected, research-intensive institution — and a vital part of the city's economic and cultural fabric.



Member of the prestigious Russell Group



Ranked among the top 200 universities worldwide\*



Over 32,500 students on campus, including 7,900 international students



More than 7,000 members of staff



A global alumni network of 280,000 across 187 countries



Annual turnover of £708.3 million, with £163.1 million in research income

\*Source: QS World Rankings 2025.



# Why base your business at The University of Liverpool

Located in the heart of Liverpool's Knowledge Quarter, our campus is a magnet for footfall, driven by our students, staff, and visitors. For retailers, this means an unrivalled opportunity to connect with a large, diverse, and loyal customer base.



High-density daily footfall



Excellent transport links



Modern and historic buildings, including 32 Grade II listed buildings



Estate of 239 buildings across 256 hectares



Close proximity to Lime Street station and city centre amenities



# ECONOMIC REACH AND SPENDING POWER

The University of Liverpool is a key economic driver within the Liverpool City Region. Retailers on campus benefit from consistent demand and long-term stability, backed by a world-class institution.



**£1.2  
billion**

contributed to the Liverpool City  
Region economy



**£258.8  
million**

student spending per year



**£2.2  
billion**

contribution to the UK  
economy



**15,870**

jobs supported in the region





# AVAILABLE RETAIL SPACES

**We offer flexible, high-visibility units suited for:**



Food and drink operators



Health and wellness providers



General retail or lifestyle brands

**Each unit benefits from:**



Prime campus locations



Strong daytime trade



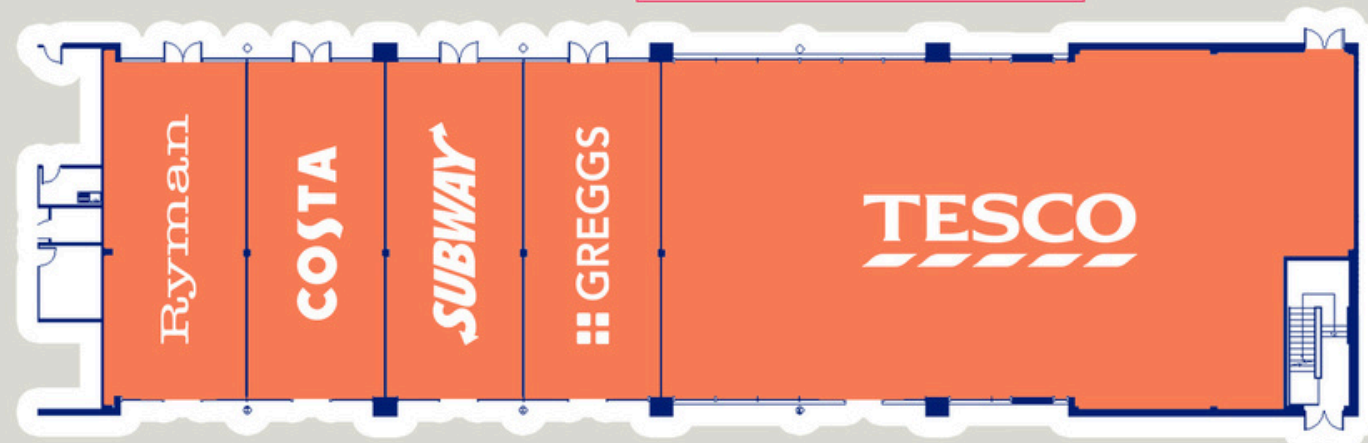
Proximity to major student hubs, accommodation, academic buildings, and transport links





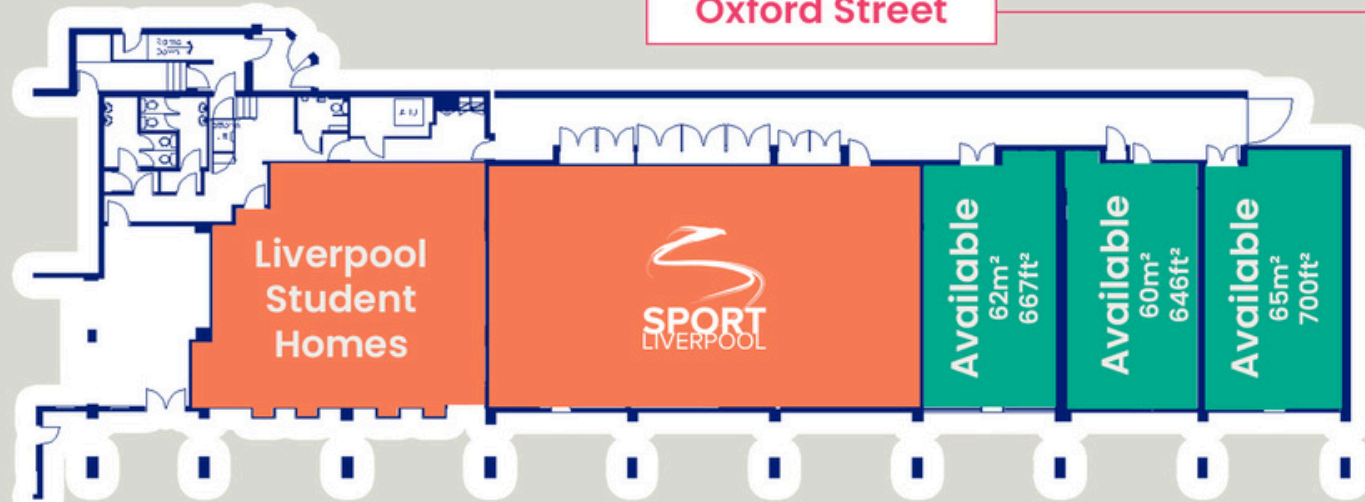
# CURRENT UNITS AVAILABLE

Foundation Building



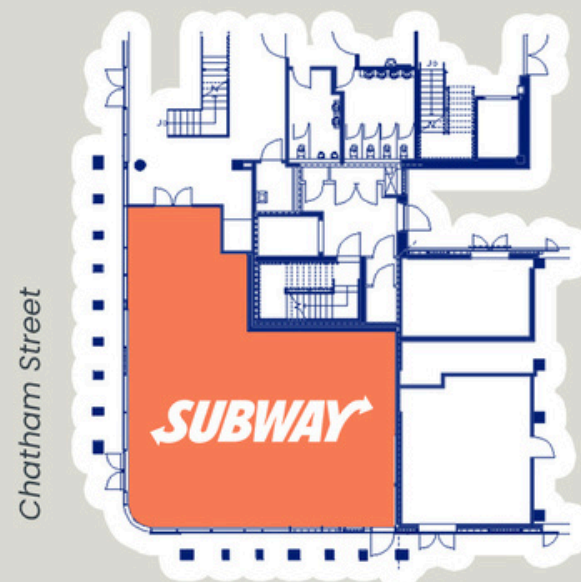
Brownlow Hill

Oxford Street



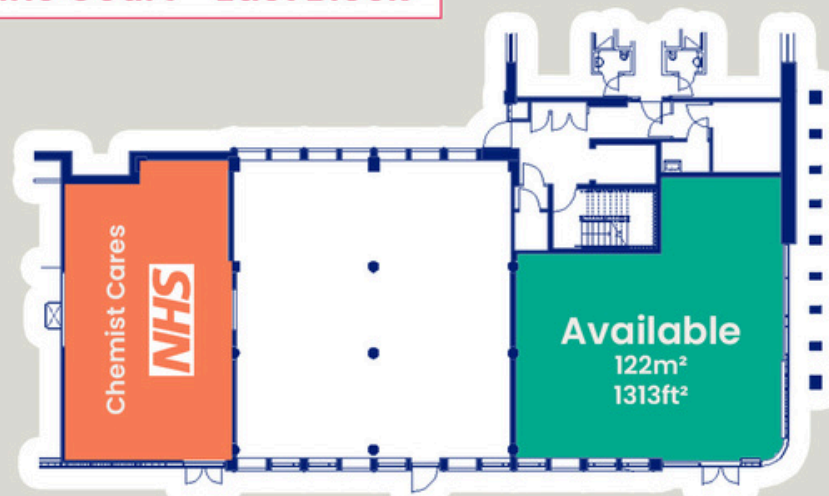
Oxford Street

Vine Court - West Block



Myrtle Street

Vine Court - East Block



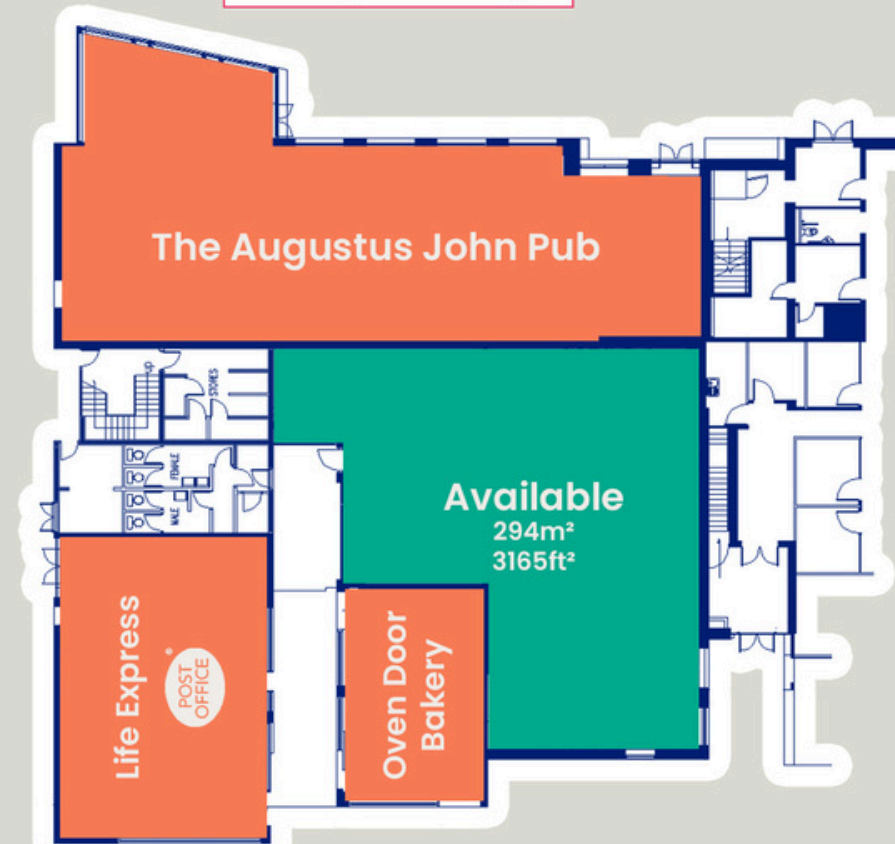
Myrtle Street

## CITY CAMPUS



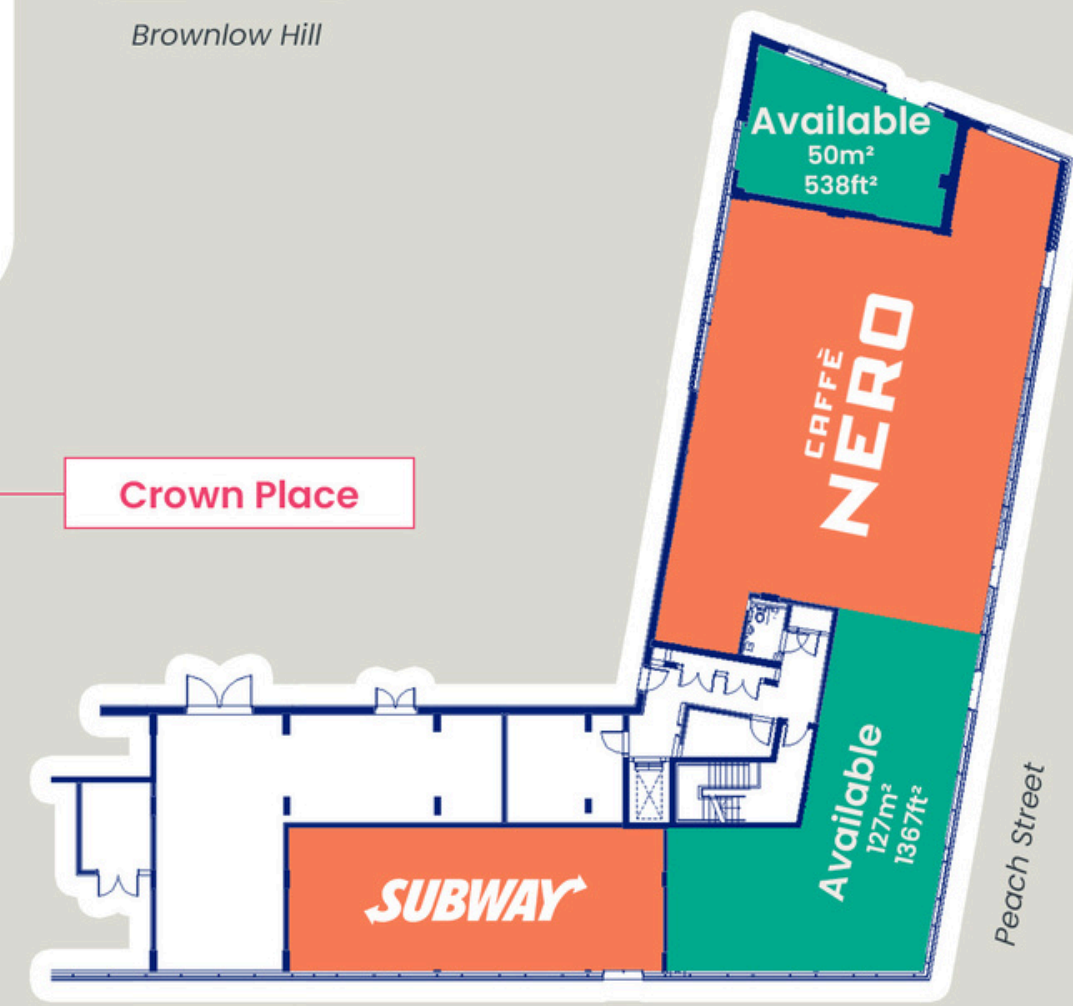
Available

Alsop Building



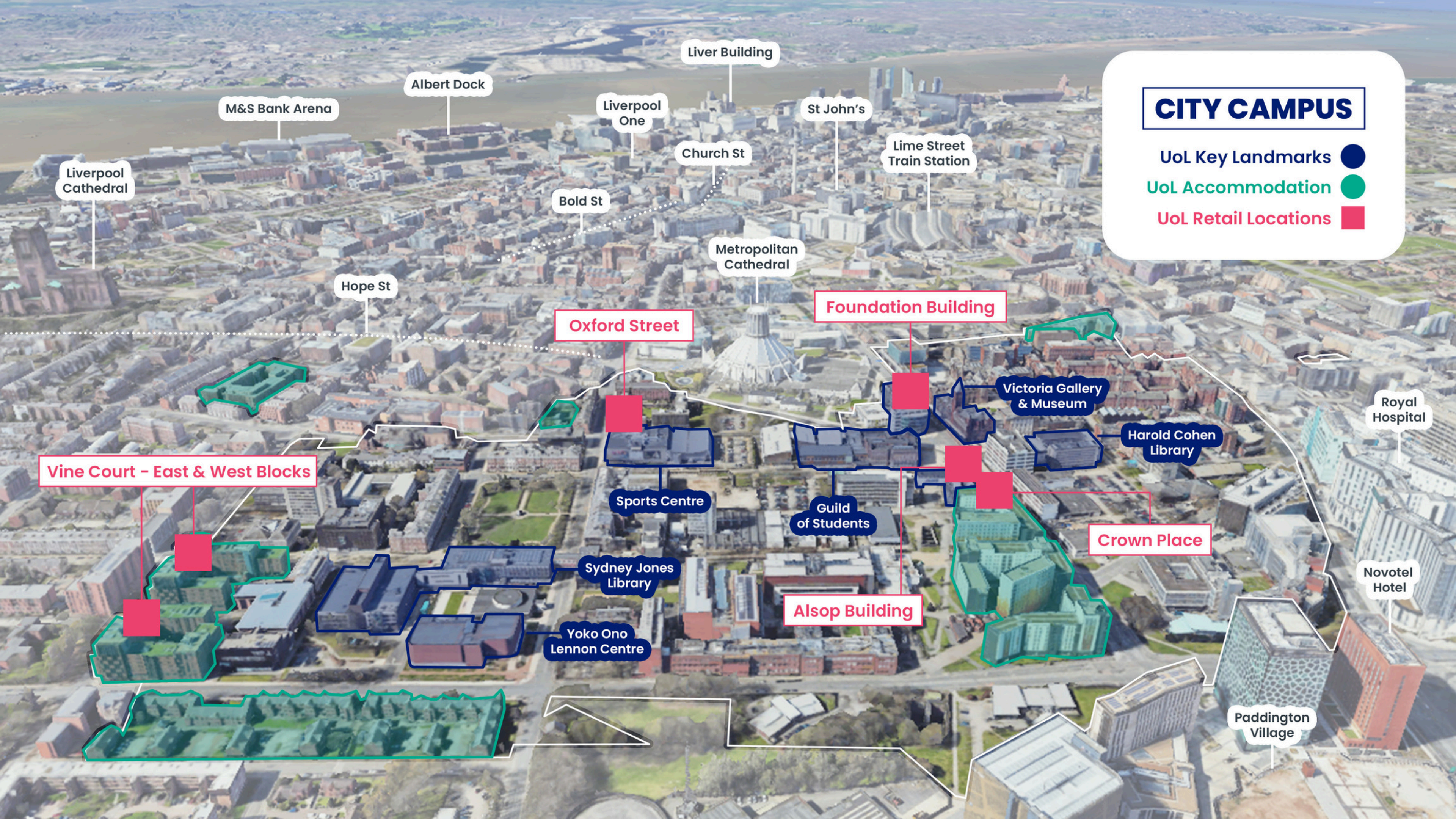
Brownlow Hill

Crown Place



Brownlow Hill





## CITY CAMPUS

UoL Key Landmarks



UoL Accommodation



UoL Retail Locations







# Join Our Growing Commercial Opportunity

We are a university with heart in a city with soul.  
**We are the original redbrick.**

## Partner with us and become part of a thriving audience.

Whether you're a local independent or national brand, the University of Liverpool offers a unique platform to grow your business and connect with a young, engaged audience.





# CONTACT US

To discuss current opportunities or to arrange a viewing, contact:

## Leasing Agent



Tel: 0161 631 2852

[www.barkerproudlove.co.uk](http://www.barkerproudlove.co.uk)

 **Gary Crompton**  
Tel: 07554402314

 **Simon Colley**  
Tel: 07966 181708

