

Blackfriars House



RE-IMAGINED RETAIL

**Rooftop restaurant
opportunity**

bruntwood
Works

Bring your ideas to life



Bruntwood Works creates and manages some of the most innovative retail and leisure spaces across Manchester, Liverpool, Cheshire, Leeds and Birmingham. Our team of specialists work with over 150 operators including independent shops, restaurants, bars, cafes and street food traders as well as national retailers, gyms, and hotels.

We're here to help make your vision a reality

From new concepts to the tried and tested, we provide a bespoke service offering flexible opportunities in vibrant places to enable your business to engage, thrive and grow.

Visionary

We're a team of forward-thinking retail and leisure experts with a track record in creating industry firsts. We love the pace and constant change created by our industry, which is why we work with both leading brands and promising entrepreneurs with fresh ideas.

Relationship focussed

We'll collaborate with you to find the perfect fit for your retail or leisure business. We carefully align your brand with the perfect destination, space and support.

Invested in you

We know what it takes to create successful retail and leisure brands. All of our spaces and destinations provide ideal conditions to launch new concepts. Our products and services scale flexibly as you grow, meaning you'll always be in the perfect place.

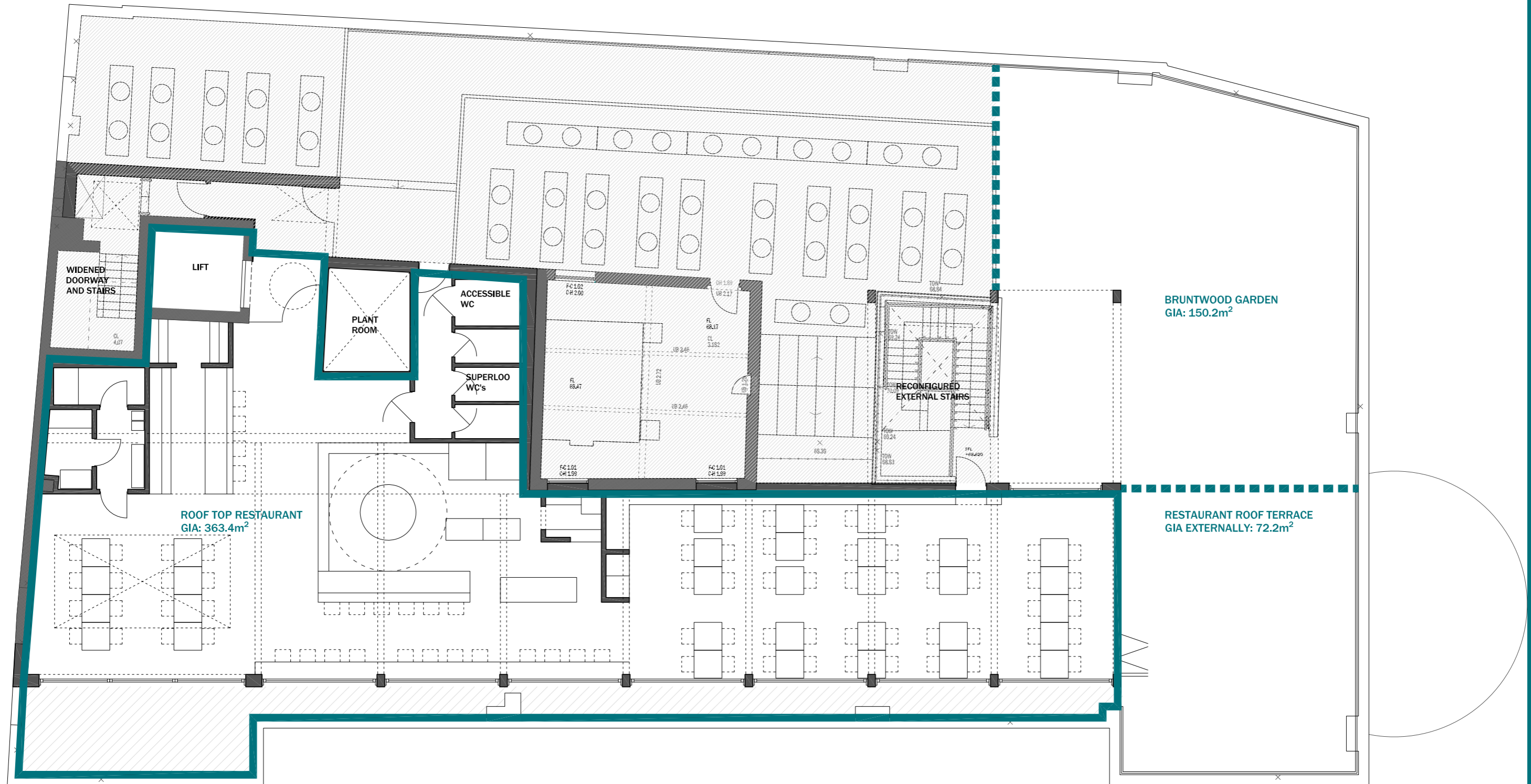


***Together
we make it
happen***



We can help you get your ideas off the ground with support for business plans, design services, planning applications and licensing.

Rooftop restaurant



3,300 Sq ft

Rooftop restaurant opportunity





We pride ourselves on nurturing relationships, we care about what makes your business tick, and with our unrivalled experience we are your ideal strategic partner.

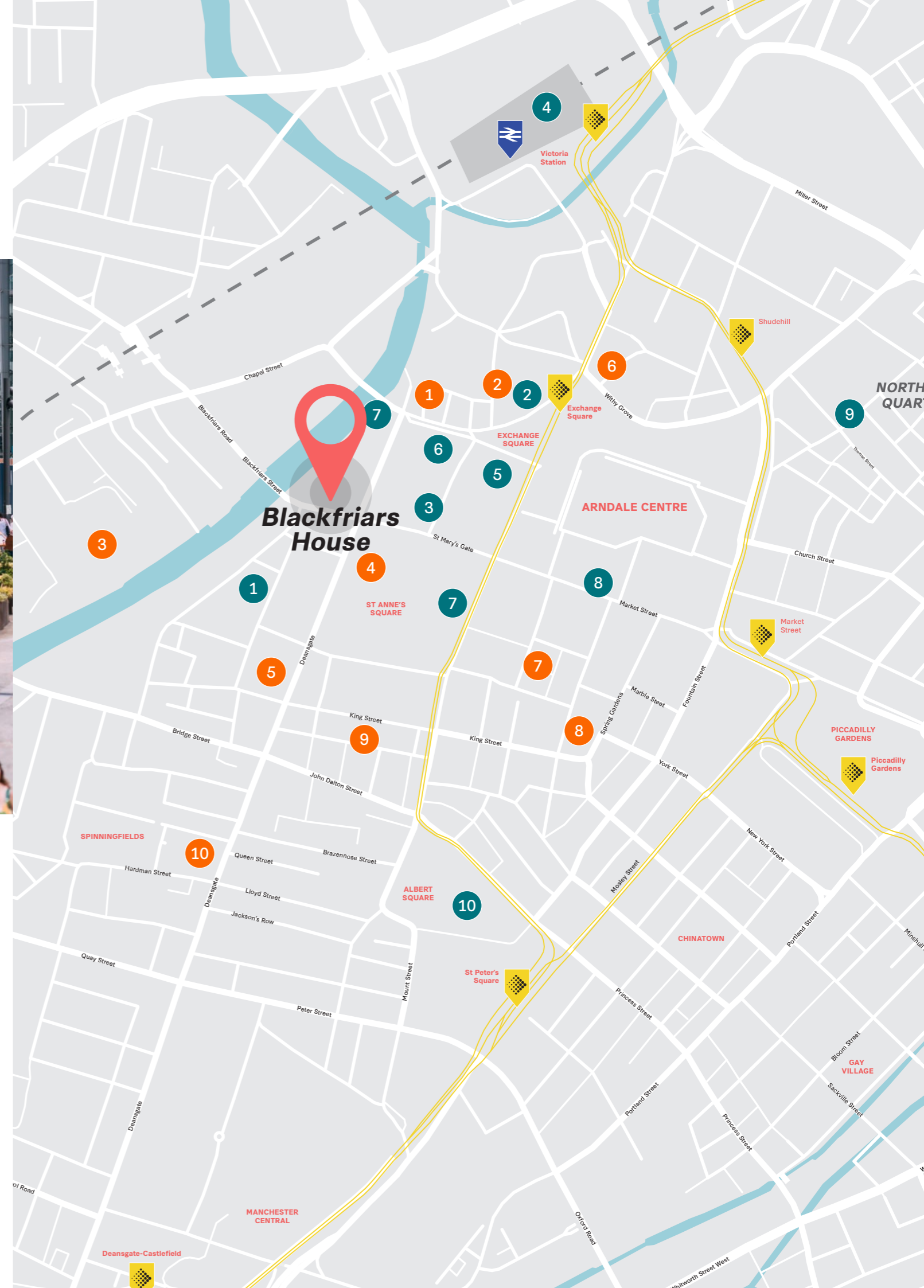
***Your vision.
Our experience.***



An opportunity in the heart of the city

Blackfriars House is in the centre of Manchester, just off Deansgate within the Parsonage Garden Conservation Zone.

It's close to many of Manchester's main transport links and makes the ideal base to experience everything the city has to offer.



Shopping & Leisure

- 1 Parsonage Gardens
- 2 The Corn Exchange
- 3 Zara
- 4 Manchester Arena
- 5 Selfridges
- 6 Harvey Nichols
- 7 Royal Exchange Theatre
- 8 Market Street
- 9 Northern Quarter
- 10 Manchester Town Hall

Eating & Drinking

- 1 Proper Tea
- 2 Mowgli
- 3 Lowry Hotel
- 4 Pot Kettle Black
- 5 The Botanist
- 6 The Print Works
- 7 The Bull & Bear
- 8 Grand Pacific
- 9 El Gato Negro Tapas
- 10 Australasia


Deansgate
2 min


Exchange Square
5 min

Net Zero Carbon

Committing to a sustainable future

We take creating sustainable environments seriously as we know that we can only fulfil our purpose of 'creating thriving cities' if we can deliver sustainable and environmentally-conscious spaces.

We were the first commercial property partner to sign up to the Green Building Council's Net Zero Carbon Commitment pledge, which aims for new buildings to be net zero carbon by 2030 and older buildings the same by 2050.

We are committed to leading the way with sustainability and we have a range of initiatives in place from waste disposal to using smart technology and using renewable energy to promoting sustainable transport, all with the aim of becoming a more sustainable business.

Our commitment to Net Zero Carbon is one of the reasons we're championing sustainable practices, and it's why we've created a specific set of science based targets to monitor our emissions.

The Carbon Trust helped us define these targets through a process that assessed global emissions, the emissions produced by the property sector, and how much of those emissions we are responsible for. Then, they can estimate how big that portion will be by 2050. By putting our targets in place, we can monitor and improve our output more efficiently.

We've introduced other measures in the fight against global heating, too:

Smart buildings strategy

We're introducing algorithmic learning into our buildings. Sensors will gather data about heating, lighting and motion to help us use energy more efficiently.

Solar panelling

We already have solar panelling on many of our buildings, but we're stepping up our commitment to solar power by installing batteries to store energy for later use.

Waste processes

Our partnership with B&M Waste is the first step in diverting 100% of our waste from landfill.

Water audits

Reducing water usage saves energy, helping to lower carbon emissions. That's why our Utilities team has carried out water audits across the estate. So far, they've been able to save two Olympic sized swimming pools worth of water per month.

Riser adoption

We're transforming the way we use electricity in our buildings, using specialist risers and voltage optimisation. These measures help us regulate, clean, and condition the incoming power supply, leading to lower energy usage.

The ultimate goal is to leave our towns and cities in a better place than we found them.



Chris Nutter

Barker Proudlove

07927561994

chris@barkerproudlove.co.uk

Chris Middleton

Retail & Leisure Manager

07458 953 893

chris.middleton@bruntwood.co.uk

Bruntwood Works
Union
Albert Square
Manchester
M2 6LW

For more information please call us
or visit the website:

0161 233 7877

bruntwood.co.uk/retail

 [bruntwoodworks](#)

 [BruntwoodWorks](#)

 [Bruntwood Works](#)

In line with the Misrepresentation Act 1967, Unfair Contract Terms Act 1977 and The Property Misdescriptions Act 1991, Bruntwood Works Limited gives notice that (1) These particulars are a general outline only, for the guidance of prospective purchasers or customers, and do not constitute the whole or any part of an offer or contract. (2) Bruntwood Works Limited cannot guarantee and accepts no liability whatsoever for the accuracy of any description, dimensions, references to condition, necessary permissions for use and occupation and other details contained herein and prospective purchasers or tenants must therefore not rely on them as agent advisor or other representative statement of fact or representations and must satisfy themselves as to their accuracy. (3) No employee of Bruntwood Works Limited has any authority to make or give any representations or warranty or enter into any contract whatever in relation to the property. (4) Bruntwood Works Limited will not be liable, in negligence or otherwise, for any loss arising from the use of these particulars. (5) Space planning contained in this brochure is indicative only and may require modifications to the building design. (6) All floor plans are not to scale and are for identification purpose only.