

TO LET Retail Unit

948 sq ft (88 sq m) inc. First Floor offices

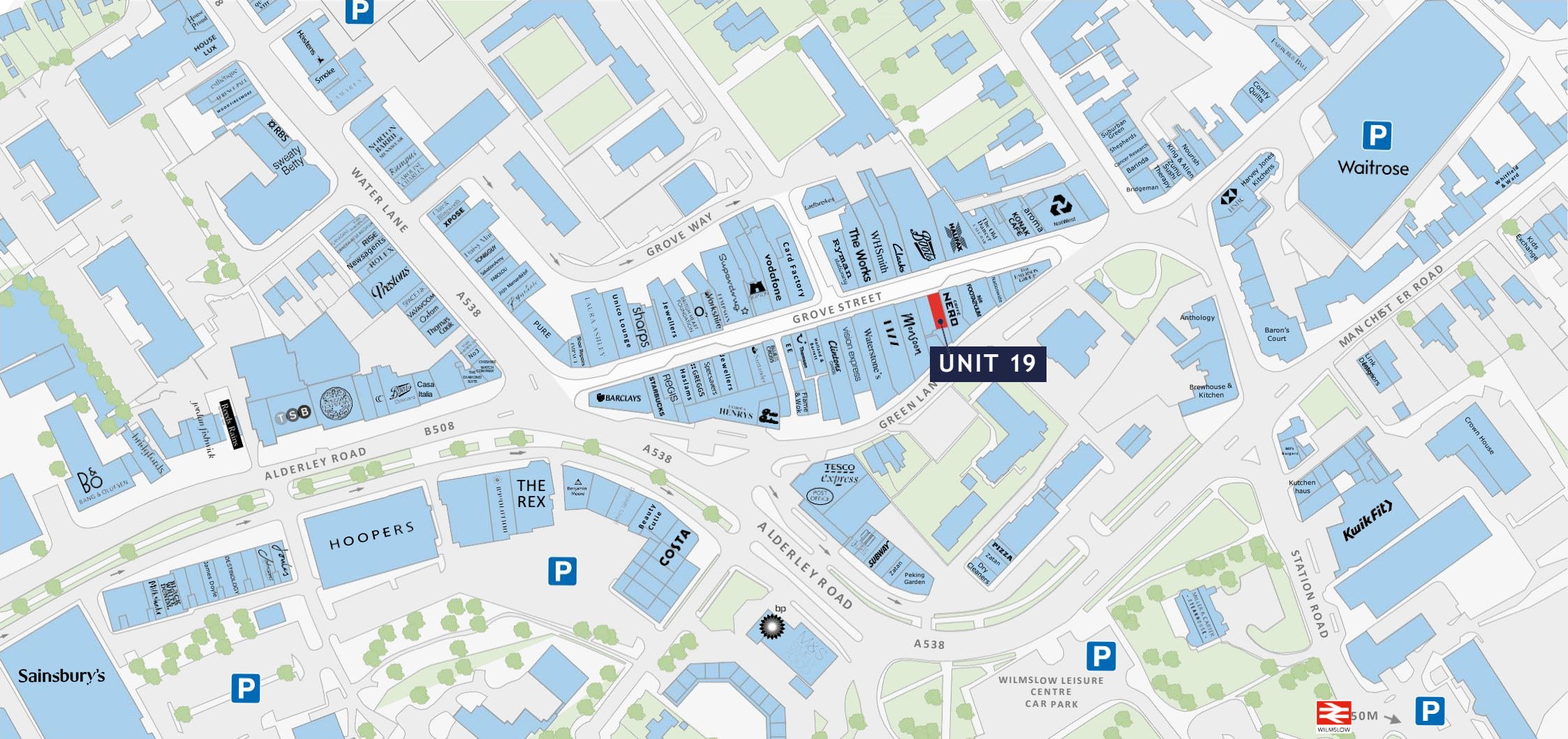
A1 planning consent



Unit 19 Grove Street, Wilmslow, SK9 1DU

Orbit
Developments

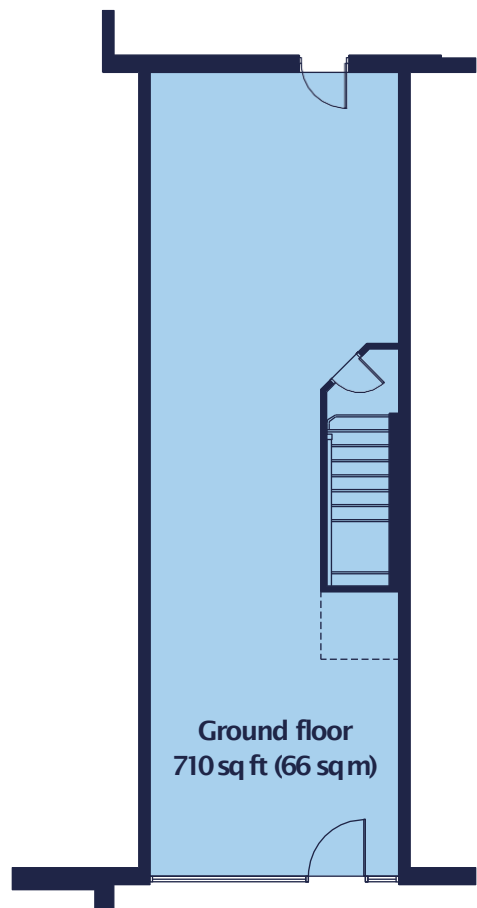




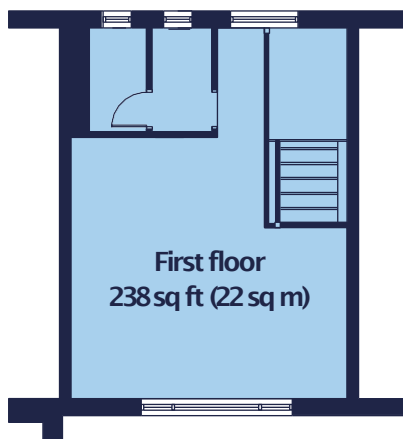
The vibrant Cheshire town of Wilmslow is renowned for its wealth of stylish shops, cafés, trendy bars and quality restaurants. The area, which lies between Handforth and the affluent suburbs of Alderley Edge, Knutsford and Prestbury is known for its up market lifestyle and its many rich and famous residents.

Situated in the south Manchester commuter belt Wilmslow has a population of approximately 160,000 within 15 minutes of the town centre and benefits from easy access to the M56, M60 and M6 motorways as well as its proximity to Manchester Airport. Wilmslow Railway Station is just a 5 minute walk from Grove Street, and provides a regular service to local villages as well as commuter services to Manchester Piccadilly.

Wilmslow shoppers have a fantastic choice of luxury brands situated alongside the usual popular high street fascias. The main shopping cluster lies within the triangle formed by Grove Street, Water Lane and Alderley Road, and this unit is ideally located to benefit from this.



GROVE STREET



THE UNIT

Ground floor	710 sq ft	(66 sq m)
First floor	238 sq ft	(22 sq m)
Total	948 sq ft	(88 sq m)

- Ample local parking
- A1 planning consent
- Ideally located in Wilmslow's pedestrianised shopping centre
- Alongside a fantastic range of high street brands and variety of niche boutiques
- Large glazed shopfront





Orbit
Developments

01625 588200

www.orbit-developments.co.uk



Chris Nutter
chris@barkerproudlove.co.uk
07927 561 994

Andrew McGuiness
andrew@barkerproudlove.co.uk
07769 641 622

www.barkerproudlove.co.uk

DISCLAIMER: These particulars are believed to be correct at time of going to press, but the developer reserves the right to change the scheme in the future. However, the vendors/ lessors and agents of this property give notice that: (1) These particulars are intended as a general outline only, for the guidance of prospective purchasers or tenants, and do not constitute the whole or any part of an offer or contract. (2) They cannot guarantee the accuracy of any description, dimension or other details contained in these particulars and prospective purchasers or tenants should not rely on them as statements of fact or representation, but must satisfy themselves as to the accuracy of such details. (3) No employee of the agents has any authority to make or give any representation or warranty, or enter into any contract whatsoever in relation to the property. (4) Prices and rents quoted in these particulars may be subject to VAT in addition. July 2020. Bella Design & Marketing www.belladesign.co.uk